

## Serial D-Sub Connector, Standard Right Angle(DR)

Pitch: 2.27mm/.109"

### SUB Series

#### Technical Data

##### Material

- Contact: Brass
- Plating: 1.25µm/ 50µ" nickel gold and tin plating see table below
- Board lock: Brass
- Plating: 1.25µm/ 50µ" nickel Ni or tin plating
- Insulator body: Glass filled polyester UL 94V-0

##### Electrical

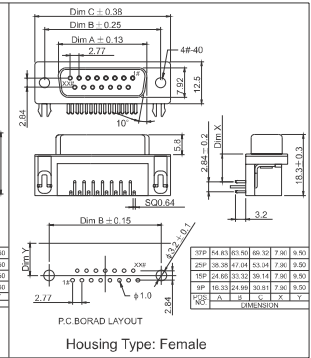
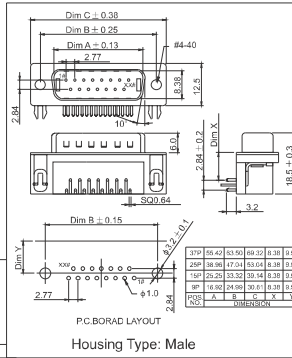
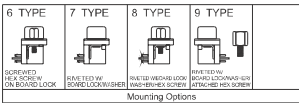
- Current rating: 3.0 Amp
- Contact resistance: 30MΩ max
- Insulation resistance: 1000MΩ min
- Dielectric withstanding voltage: 1000VAC RMS

##### Mechanical

- Operating Temperature: -40°C to +85°C
- Mating cycle: ≥ 500 mating cycle

##### Applications and Features

- Input / Output Connector.
- Available in 9, 15, 25 and 37 positions.
- Available in plugs and receptacles.
- Available hold firm with screw to plug/receptacle.
- Solder on P.C.B.



Notes: Please replace "X" with appropriate coding listed in the tables below

X — SUB — DRXX — X0XX — XX0

RoHS	No. of contacts	Housing type	Mounting options	Contact material	Contact plated	Insulator material	Insulator color								
Code	Definition	Code	Definition	Code	Definition	Code	Definition								
Blank	No-RoHS	A	9 PIN	M	Male	6	Screwed Hex Screw On Board Lock	2	Brass	A	Gold 1µ"/Light Tin	0	PBT	0	Black
R	RoHS	B	15 PIN	F	Female	7	Riveted w/ Board Lock/Washer	7	Phosphor bronze	B	Gold 3µ"/Light Tin	2	NYLON	6	Blue
		C	25 PIN			8	Riveted w/ Board Lock/Washer/Hex Screw			C	Gold 5µ"/Light Tin			9	White
		E	37 PIN			9	Riveted w/ Board Lock/Washer/Attached Hex Screw			E	Gold 15µ"/Light Tin				

Note: Dimensions are shown in Millimeters .Dimensions are for reference only.