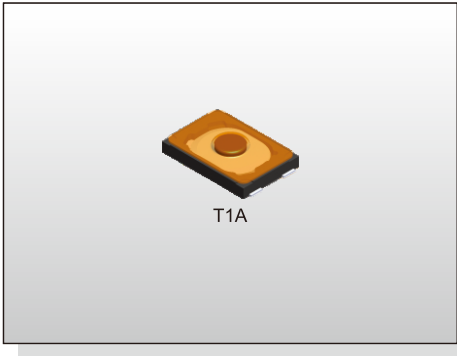


TACT SWITCH  
**T1A** SERIES

2.8\*1.9 J Terminal SMT Type  
(H=0.60mm)



**FEATURES**

- ※ Compact-size 2.8\*1.9mm
- ※ Low profile with 0.60mm
- ※ Long operation cycles

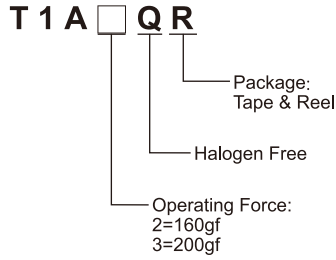
**APPLICATION**

- ※ Smart phone
- ※ Digital camera, Medical
- ※ Portable electronic device
- ※ 3C products

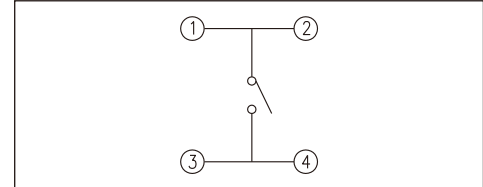
**SPECIFICATION**

Contact Rating	10uA, 1V DC to 50mA, 12V DC
Contact Resistance	500mΩ max.
Insulation Resistance	100MΩ min. 100V DC
Dielectric Strength	100V AC/1 minute
Operating Force	160±50gf / 200±50gf
Travel	0.13mm
Operating Life	300,000 cycles
Operating Temp.	-40°C ~ +85°C
Storage Temp.	-40°C ~ +85°C

**HOW TO ORDER**



**CIRCUIT**

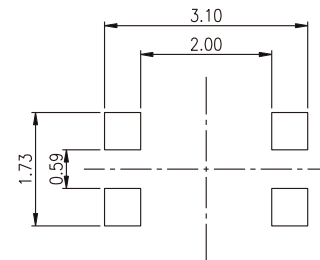
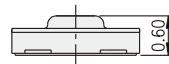
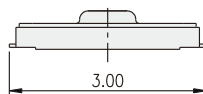
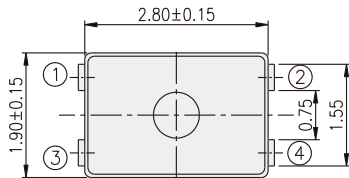


**PACKAGE**

<Tape & Reel>  
16000 pcs

TACT SWITCH

**T1A**



P.C.B. LAYOUT