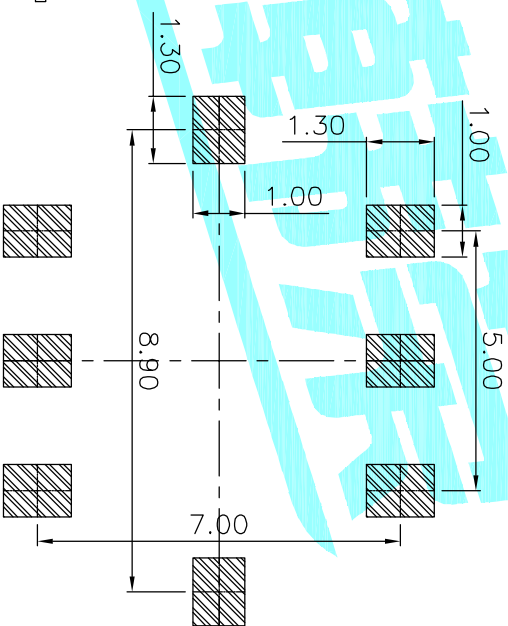
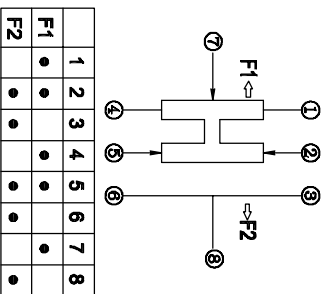


PCB Layout (Pattern side)



- Note:
1. Rating : DC 12V 50mA
  2. Contact Resistance :  $\leq 50m\Omega$
  3. Insulation Resistance: DC500V 1Minute
  4. Operating Temperature Range:  $-25^{\circ}C+80^{\circ}C$
  5. Ambient Humidity Used:  $\leq 85\%RH$
  6. Operating Force :  $200gf \pm 50gf$
  7. Operating Life : 10,000Cycles



Circuit Diagram

⑤	Contact Spring	—	1	Phosphor bronze	Ag Plated	—
④	Cover	—	1	SUS	Natural	—
③	KNDB	—	1	PA10T	Black	—
②	Terminal	—	3	Brass	Ag Plated	—
①	Base	—	1	LCP	Black	—
ITEM	PART NAME	TER'NO.	QTY.	MATERIAL	FINISHING	REMARK
APPROVALS		DATE		—		
DRAWN JKUN.LLU		2013/10/8		—		

**HRON**  
ELECTRONICS CO.,LTD

CHECKED TITLE: TOGGLE SWITCHES

APPROVALS PART NO. K3-2276S

TOLERANCES ARE	30~12.5 10~30 5~10 ~5	$\pm 0.30$ $\pm 0.20$ $\pm 0.15$ $\pm 0.10$	ANGLE	$\pm 2^{\circ}$	UNIT: mm	SCALE: 1:1	PROJ:	SHEET 1 OF 1
----------------	--------------------------------	--	-------	-----------------	----------	------------	-------	--------------

ECN NO.	REV.	DATE.	DESCRIPTION.
—	A	—	NEW

CHANGE. CHECK. APPRO.

—