 EXCEL CELL ELECTRONIC CO., LTD.	NO.	A31229		
	SPECIFICATION	Edition	2	Page

## ECS - INDUSTRIAL CONTROL SWITCH PILOT LAMP

### 1. FEATURES

- Detachable contact block for easy installation and removal. It can meet variety of needs and improve work efficiency.
- IP65 waterproof type. It is designed for liquid and oil prevention and enables to be used in different environment.
- In accordance with the standards of UL, cUL, CE, CCC, and TUV.

### 2. SPECIFICATIONS

#### 2-1. ELECTRICAL

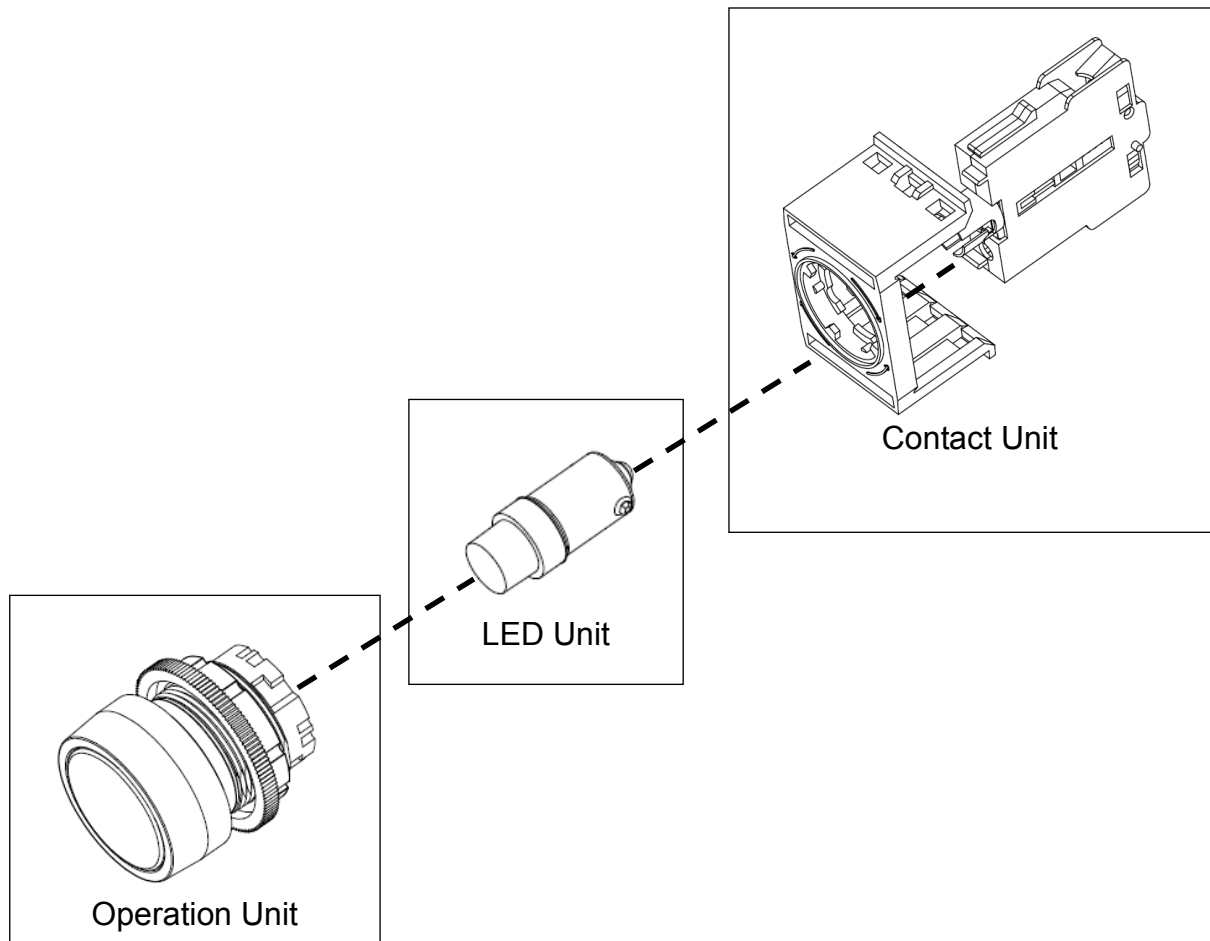
2-1-1. Rated thermal current	10A
2-1-2. Rated insulation voltage	650V
2-1-3. Dielectric strength	2500V AC, 1 min.

#### 2-2. MECHANICAL AND ENVIRONMENTAL

2-2-1. Operating temperature	-25°C ~ +55°C (for illuminated type)
2-2-2. Storage temperature	-40°C ~ +85°C
2-2-3. Humidity	45% ~ 85% RH
2-2-4. Degree of protection	IP65 (from the front of the panel)
2-2-5. Degree of contamination	3 (IEC 60947-5-1)
2-2-6. Vibration resistance	10-55Hz amplitude 0.5mm
2-2-7. Shock resistance	1000 m/s <sup>2</sup> (100G)(destruction)
2-2-8. Connection type	M3.5 screw connection

<b>ECE</b> EXCEL CELL ELECTRONIC CO., LTD.	NO.	A31229		
	SPECIFICATION	Edition	2	Page

### 3. CONSTRUCTION

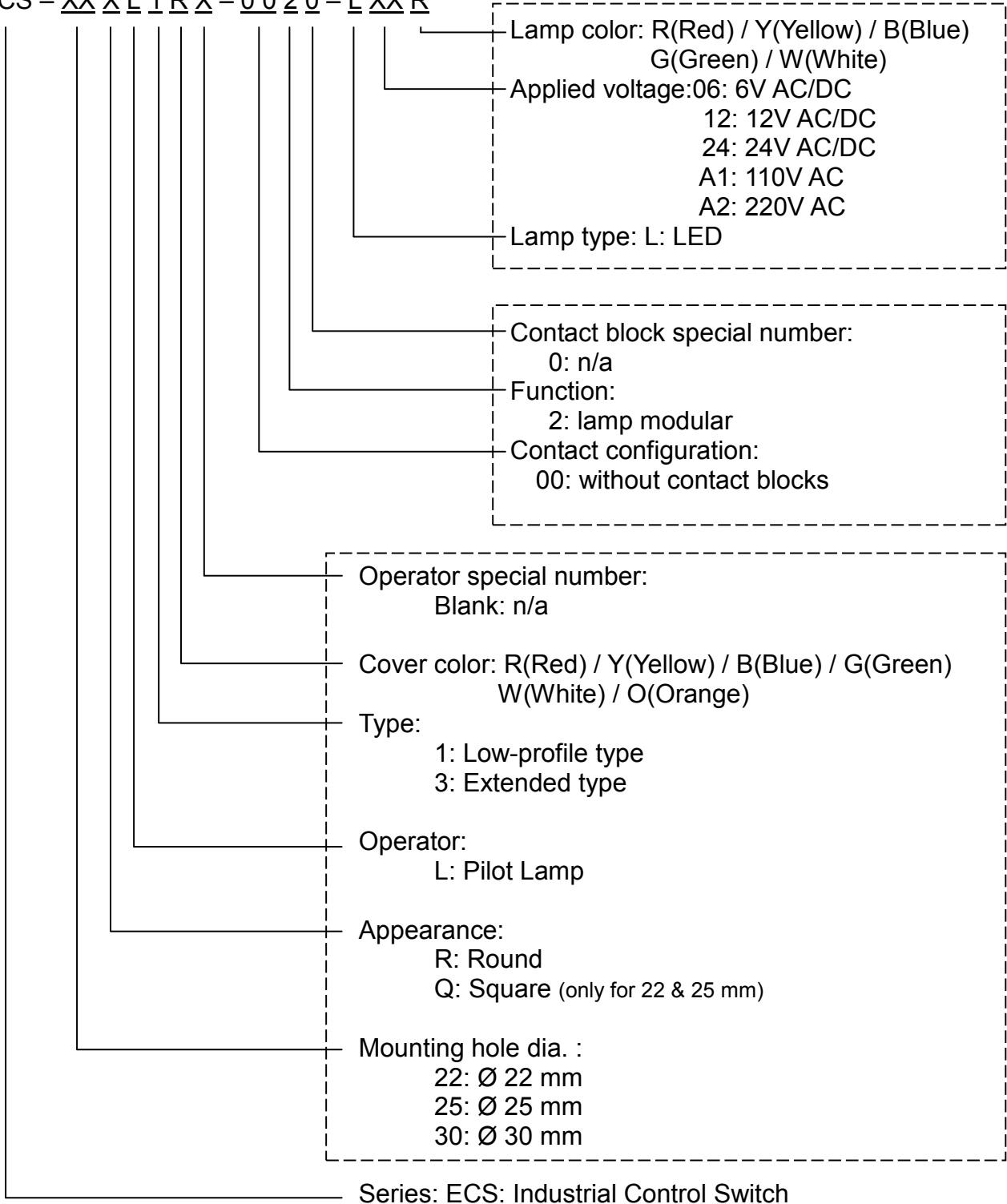


- Operation unit, LED unit, and contact unit (contact blocks) can be sold separately.
- Please see [4.Part numbering system] for operation unit part number. For other accessories (LED lamp, contact block, etc.), please refer to accessory part in catalog.

<b>ECE</b>	<b>EXCEL CELL ELECTRONIC CO., LTD.</b>	<b>NO.</b>		<b>A31229</b>	
		<b>SPECIFICATION</b>		<b>2</b>	<b>Page</b>

4. PART NUMBERING SYSTEM

ECS - XX X L 1 R X - 00 20 - L XX R



<b>ECE</b>	<b>EXCEL CELL ELECTRONIC CO., LTD.</b>	<b>NO.</b>	<b>A31229</b>		
			<b>SPECIFICATION</b>		<b>2</b>

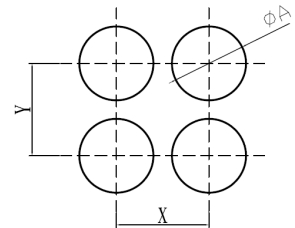
5. INSTALLATION

5-1. Panel thickness

- The panel thickness must be 1 to 7 mm.
- Take into consideration about the thickness of accessories (such as name plate, switch guard, etc.) while using.

5-2. Panel cutout

- Cutout diameter and distance



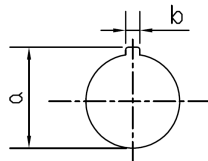
Unit: mm

	22R / 25R	22Q / 25Q	30R
A	22.3/25.3 <sup>+0.4</sup> <sub>-0</sub>	22.3/25.3 <sup>+0.4</sup> <sub>-0</sub>	30.5 <sup>+0.5</sup> <sub>-0</sub>

Unit: mm

	22R / 25R	22Q / 25Q	30R	Long Lever Selector Switch Emergency Stop Switch
X	30	32	50	50
Y	50	50	65	50

- Key recess cutout (22mm only)



Unit: mm


Mounting Hole(Ø)	a	b
22	24.1 <sup>+0.5</sup> <sub>-0</sub>	3.2 <sup>+0.2</sup> <sub>-0</sub>

- Panel installation

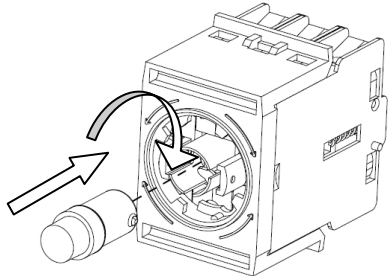
1. Place the operation unit through panel mounting hole.
2. Install the nut by using tightening tool.
3. Make sure the operation unit fix on the panel firmly.

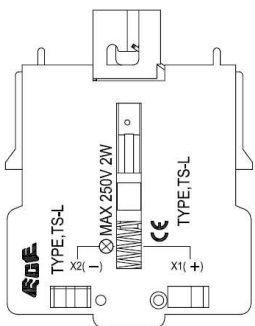
5-3. Operation unit and contact unit installation

1. Fix the operation unit on the panel.
2. Connect the operation unit with snap-fit joint part of contact unit.
3. Rotate contact unit to fix firmly as shown in the left figure.

 EXCEL CELL ELECTRONIC CO., LTD.	NO.	A31229		
	SPECIFICATION	Edition	2	Page

#### 5-4. LED lamp installation

	<ol style="list-style-type: none"> <li>1. Aim LED lamp to the lamp holder and press down to the bottom.</li> <li>2. Rotate the LED lamp to make sure the lamp is firmly installed.</li> <li>3. While installation and removal, please hold the metal part of LED lamp to avoid damaging LED lamp.</li> </ol>
---	--

	<ol style="list-style-type: none"> <li>1. When using DC LED lamp, please connect the positive pole (+) to X1 terminal as shown in left figure.</li> <li>2. The LED lamp may be erroneously lightened by a leaking current from the circuit. The malfunction can be prevented by connecting a shunt resistor in parallel with the LED lamp.</li> </ol>
--	---

#### 6. PACKAGING

6-1. ECS product is packed without assembly (packed by set), 10 sets per box.

##### 6-2. Label information

- |                   |                         |
|-------------------|-------------------------|
| (1) part number   | (6) QC inspection stamp |
| (2) Lot number    | (7) Company mark        |
| (3) Quantity      | (8) Company name        |
| (4) Tester number | (9) Notice              |
| (5) Date code     |                         |

#### 7. DIMENSIONS

7-1. See attached drawings

#### 8. OPTIONS


8-1. Key recess type operation unit is available (22mm only)

8-2. Ø22mm and Ø25mm type have the same structure. Different thickness of O-rings can be ordered separately to fit into Ø22mm and Ø25mm hole in the panel.

##### 8-3. LED Specification

LED Type	BA9S-T8
Durability(reference)	Approx. 50,000 Hrs.
Voltage	Printed on the LED

8-4. For other accessories (name plate, control box, and etc.), please refer to accessory part in the catalog.

 EXCEL CELL ELECTRONIC CO., LTD.	NO.	A31229		
	SPECIFICATION	Edition	2	Page

9. REMARK

9-1. Safety Certification

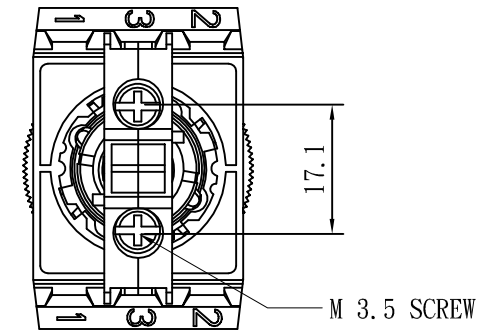
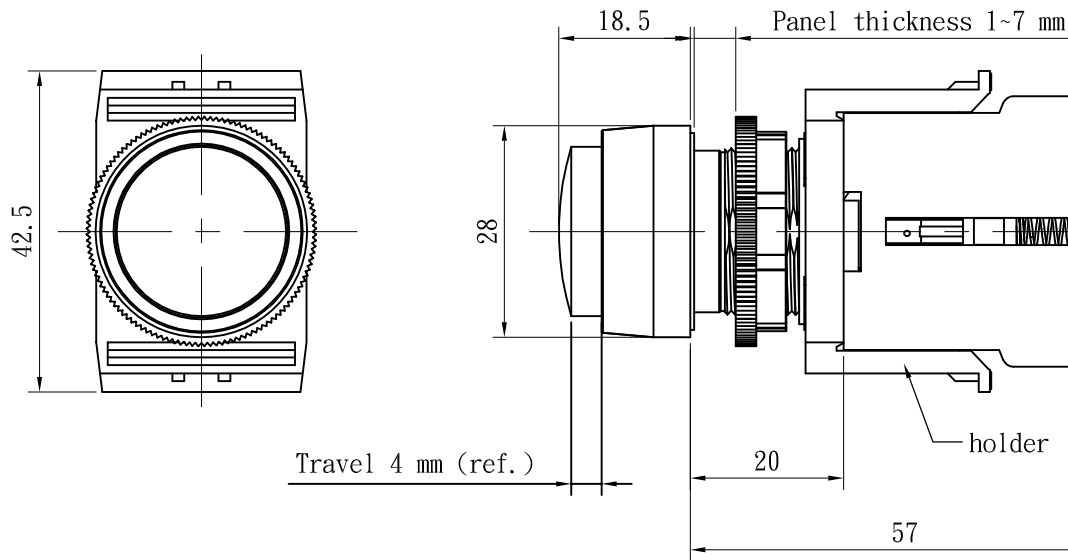
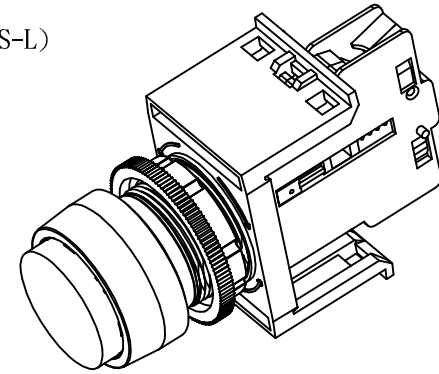
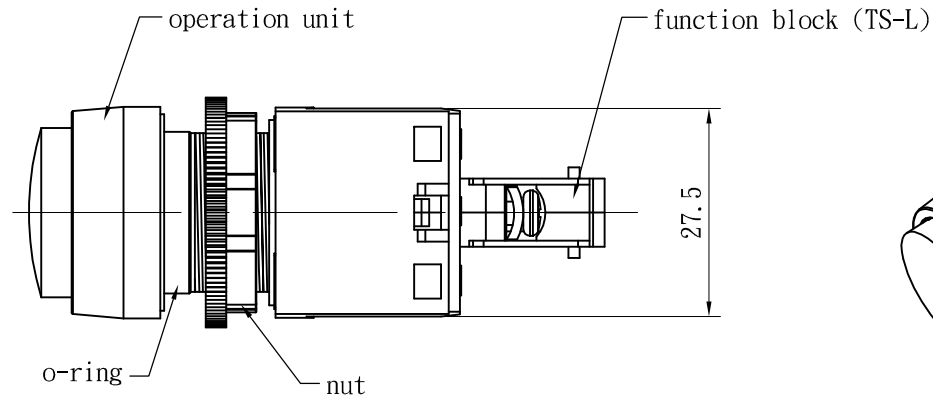
Safety Standard	Certification
UL-508	UL / cUL , file NO. E155181
CSA C22.2 NO.4	
EN60947-5-1	R50363071
EN60947-5-5 (Emergency Stop Switch)	R50362996
CCC GB14048.5	2016010305912684


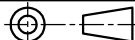
9-2. CAUTION

- To prevent injury, this device must be disconnected from all power sources prior to wiring and other initiating work.
- Use tightening tool when installing the operation unit in the panel cutout. Do not use pliers and do not tighten excessively, otherwise the operation unit may be damaged.
- Make sure contact blocks are firmly fixed on contact holder during assembly. It will avoid contact blocks separated from holder during operation.



# ECS-22RL3X-0020



				NORMAL TOLERANCE		 EXCEL CELL ELECTRONIC CO., LTD.				PART NUMBER		ECS-22RL3X-0020							
				RANGE	TOLERANCE					UNIT		MM (INCH)		PART NAME		ECS			
				0-1	±0.1	CHECK	Marcus Li	DESIGN	Alice Lin	DRAWN	Alice Lin	SCALE		1:1		TYPE		Pilot Lamp	
				1-4	±0.3							SIZE		A4		FILE NAME		76922RLXXA.dwg	
				4-16	±0.5							PROJECTION				EDITION		A	
				16-63	±0.8														
				63-250	±1.0														
NO.	DETAILS	ALTERED BY	DATE																