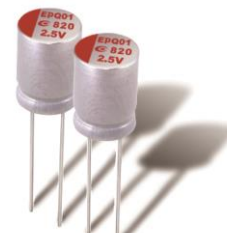


## AREP Series **Power**

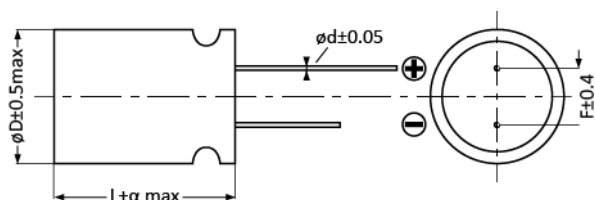
- Super low ESR, high ripple current capability, high voltage
- Rated voltage: 6.3~16Vdc
- Endurance 3000hrs at 105°C
- Suitable for AC-DC converters, voltage regulators and decoupling applications
- RoHS Compliant



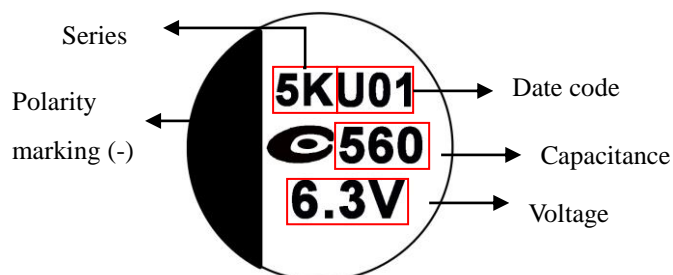
### Specification

Category Temperature Range	-55 to 105°C	Rated Voltage Range	6.3 to 16Vdc
Rated Capacitance Range	270 to 2200 (µF)	Capacitance Tolerance	±20% (M)
Surge Voltage	Rated voltage X 1.15 (at 105°C)	Dissipation Factor	0.1 max. (at 20°C 120Hz)
Leakage Current	Shall not exceed values shown in standard ratings. (at 20°C after 2 mins.)		
Endurance	105°C, 3000hrs, rated voltage applied		
	Appearance	No significant damage	
	Capacitance Change	≤ ±20% of the initial value	
	DF(tanδ)	≤ 150% of the initial specified value	
	ESR	≤ 150% of the initial specified value	
	Leakage current	≤ The initial specified value	
Damp Heat (Steady State)	60°C, 90 to 95% RH, 1000hrs, no voltage applied		
	Appearance	No significant damage	
	Capacitance Change	≤ ±20% of the initial value	
	DF(tanδ)	≤ 150% of the initial specified value	
	ESR	≤ 150% of the initial specified value	
	Leakage current	≤ The initial specified value	
Surge Voltage	1,000 cycles and each one includes charge with surge voltage specified at 105°C for 0.5min through a protective resistor (R=1kΩ) and discharge for 5.5min.		
	Appearance	No significant damage	
	Capacitance Change	≤ ±20% of the initial value	
	DF(tanδ)	≤ 150% of the initial specified value	
	ESR	≤ 150% of the initial specified value	
	Leakage current	≤ The initial specified value	

### Dimensions and Marking



SIZE Code	øD±0.5 max	L	α	ød ±0.05	F±0.4
05X8	5.0	8.0	1.0	0.5	2.0
06X8	6.3	8.0	1.0	0.6	2.5
06A0	6.3	10.0	1.0	0.6	2.5
08X8	8.0	8.0	1.0	0.6	3.5
08A2	8.0	11.5	1.5	0.6	3.5
08B0	8.0	20.0	1.5	0.6	3.5
10A2	10.0	11.5	1.5	0.6	5.0
10B0	10.0	20.0	1.5	0.6	5.0



AREP Series **Power**

Standard Ratings

WV/Vdc (SV)	Cap (µF)	Size Code	Leakage Current (µA)	ESR (mΩmax/20%, 100k to300kHz)	Rated Ripple Current (mArms/ 105°C /100kHz)	Part No.
6.3 (7.2)	470	05X8	592	8	4,050	6R3AREP471M05X8
	470	06X8	592	8	4,700	6R3AREP471M06X8
	560	06X8	705	8	4,700	6R3AREP561M06X8
	680	06X8	857	8	4,700	6R3AREP681M06X8
	820	06A0	1,033	8	4,700	6R3AREP821M06A0
	1000	06A0	1,260	8	4,700	6R3AREP102M06A0
	1500	08A2	1,890	7	6,100	6R3AREP152M08A2
	2200	10A2	2,772	7	6,640	6R3AREP222M10A2
7.5 (8.6)	500	05X8	750	12	3,500	7R5AREP501M05X8
	680	06X8	1,020	12	4,780	7R5AREP681M06X8
16 (18.4)	270	08X8	864	10	5,000	160AREP271M08X8
	270	08A2	864	10	5,230	160AREP271M08A2
	470	08A2	1,505	10	5,230	160AREP471M08A2
	470	10A2	1,505	10	6,100	160AREP471M10A2
	560	08A2	1,792	14	4,950	160AREP561M08A2
	680	08A2	2,176	10	5,230	160AREP681M08A2
	820	08A2	2,624	10	5,230	160AREP821M08A2
	820	10A2	2,624	10	6,100	160AREP821M10A2
	1000	10A2	3,200	12	5,400	160AREP102M10A2
	2200	10B0	7,040	8	8,100	160AREP222M10B0