

Data Sheet

RT083xxDBWC

Page 1/4

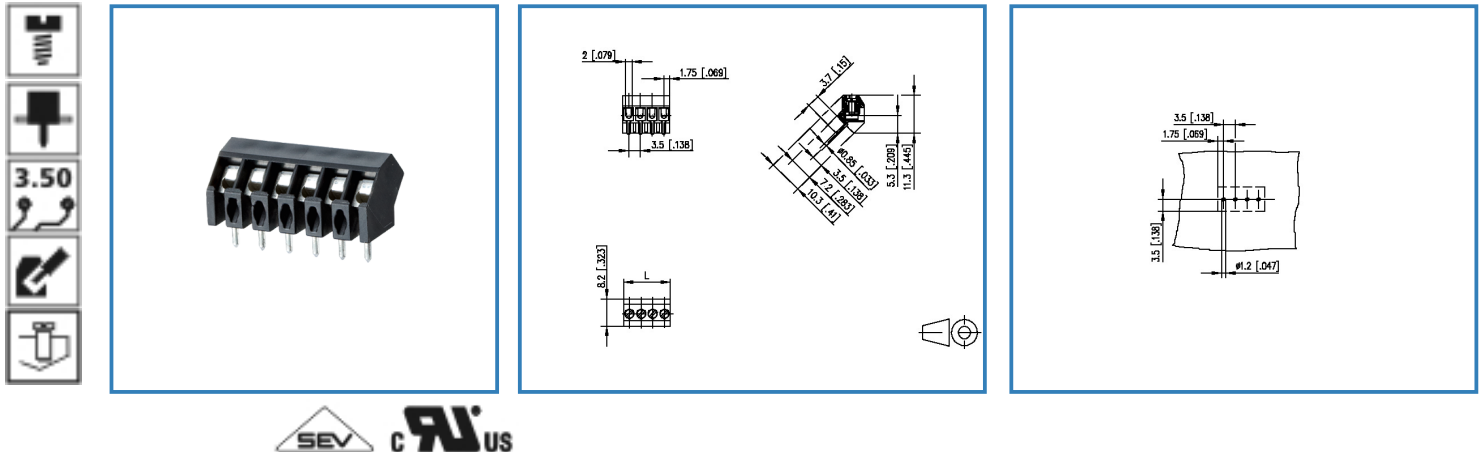
P/N

311051xx

xx=number of poles

2013/12/05

Illustration



see enlarged drawing at the end of the document

Product specification

- screw type terminal block, solderable
- centerline 3.50 mm, direction of connection 45°
- wire protector, fittable without loss of poles
- color black
- Connection data

CRIUS V / A / AWG 300 / 10 / 28 - 16

SEV 1.0 mm² 130 V / 13.5 A / T60

Data Sheet

RT083xxDBWC

Page 2/4

P/N

311051xx

xx=number of poles



2013/12/05

Technical Data

General Data

Tightening torque SEV	0.15 Nm		
Tightening torque UL	3 lb-in		
Solder pin length	3.7 mm		
min. number of poles	2		
max. number of poles	16		
Insulating material class	CTI 600		
clearance/creepage dist.	2.1 mm		
protection category	IP 20		
Overvoltage category	III	III	II
Pollution degree	3	2	2
Rated voltage	160 V	400 V	400 V
Rated test voltage	2.5 kV	2.5 kV	2.5 kV

Connection data

 V / A / AWG	300 / 10 / 28 - 16		
 1.0 mm ²	130 V / 13.5 A / T60		

Material

insulating material	PA66
flammability class	V0
terminal body material	CuZn
terminal body surface	Ni + Sn
screw surface	Zn Cr(VI)-frei/free
wire protector material	CuSn
wire protector surface	Sn
screw thread	M2

Climatic properties

upper limit temperature	105 °C
lower limit temperature	-40 °C

General

solderability	For THR products acc. to IPC/JEDEC J-STD-020D-MSL 1 For THT products max. 260 °C / 10 s
Tolerance	ISO 2768 -mH

Data Sheet

RT083xxDBWC

Page 3/4

P/N

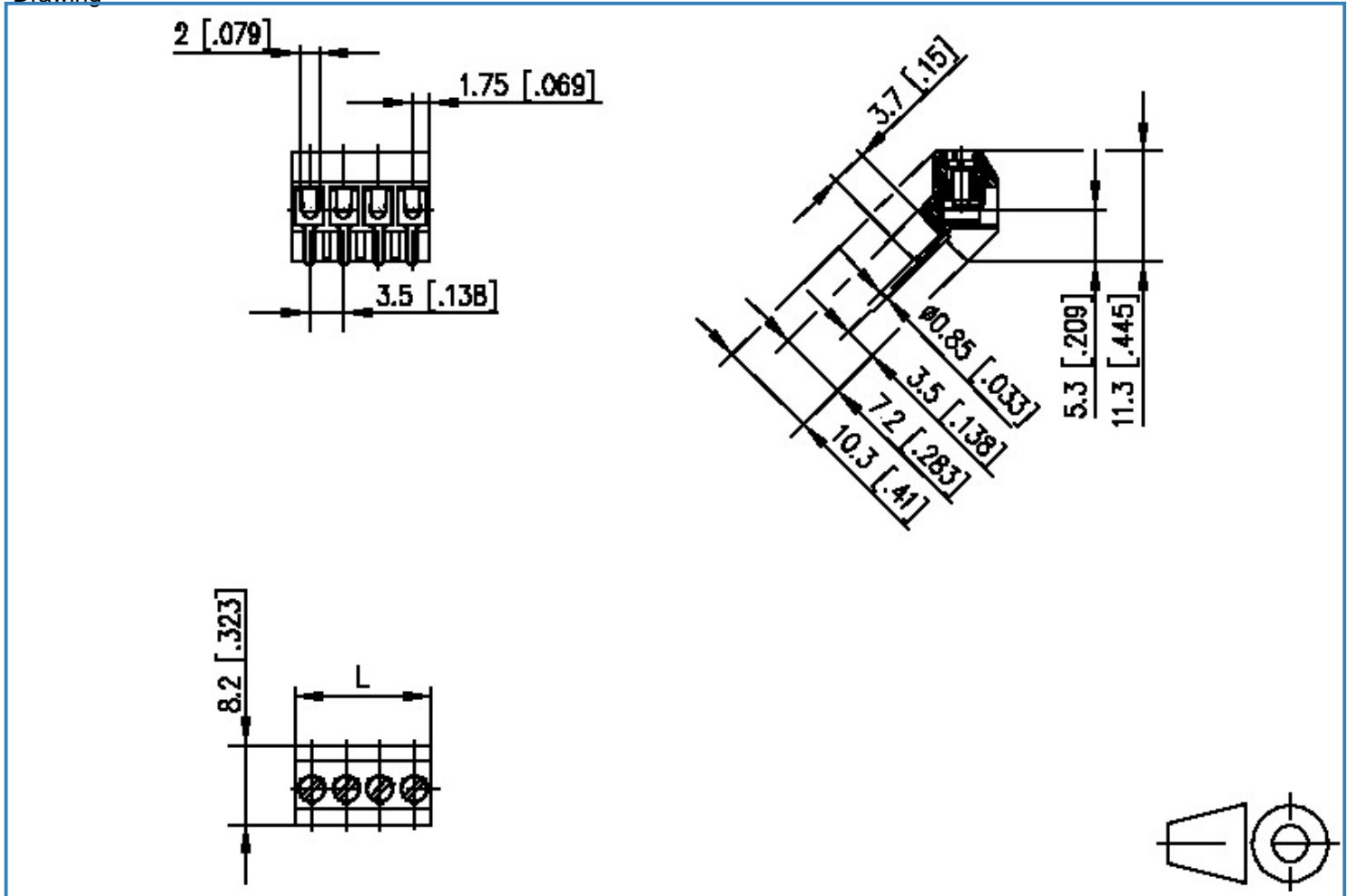
311051xx

xx=number of poles

2013/12/05

Illustration

Drawing



$L = (\text{pole size} - 1) \times \text{centerline} + 3.5 [0.138]$



Data Sheet

RT083xxDBWC

Page 4/4

P/N

311051xx

xx=number of poles

2013/12/05

PCB Layout

