

# 1N60PW, 1N60SW

## Schottky Barrier Diode

### Features

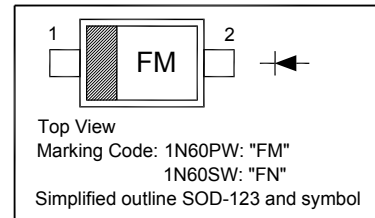
- High reliability
- Low forward voltage and reverse current

### Applications

- For electronic calculator, etc.
- Low current rectification and high speed switching

### PINNING

PIN	DESCRIPTION
1	Cathode
2	Anode



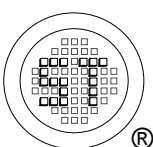
### Absolute Maximum Ratings ( $T_a = 25^\circ\text{C}$ )

Parameter	Symbol	Value	Unit
Peak Reverse Voltage	$V_{RM}$	45	V
Reverse Voltage	$V_R$	10	V
Peak Forward Current	$I_{FM}$	150	mA
Average Rectified Output Current	$I_O$	50	mA
Surge Forward Current	$I_{surge}$	500	mA
Junction Temperature	$T_j$	125	$^\circ\text{C}$
Storage Temperature Range	$T_{stg}$	-55 to +125	$^\circ\text{C}$

### Characteristics ( $T_a = 25^\circ\text{C}$ )

Parameter	Symbol	Min.	Max.	Unit
Reverse Voltage at $I_R = 100 \mu\text{A}$	$V_R$	45	-	V
Forward Current at $V_F = 1 \text{ V}$	$I_F$	4	-	mA
Reverse Current at $V_R = 10 \text{ V}$	$I_R$	-	50 100	$\mu\text{A}$
Rectification efficiency at $V_i = 2 \text{ Vrms}$ , $R = 5 \text{ K}\Omega$ , $C = 20 \text{ pF}$ , $f = 40 \text{ MHz}$	$\eta$	55	-	%

Pair  $\Delta I_F \leq 6 \text{ mA}$  at 1V,  $\Delta I_R \leq 20 \mu\text{A}$  at 10 V

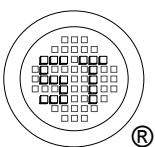
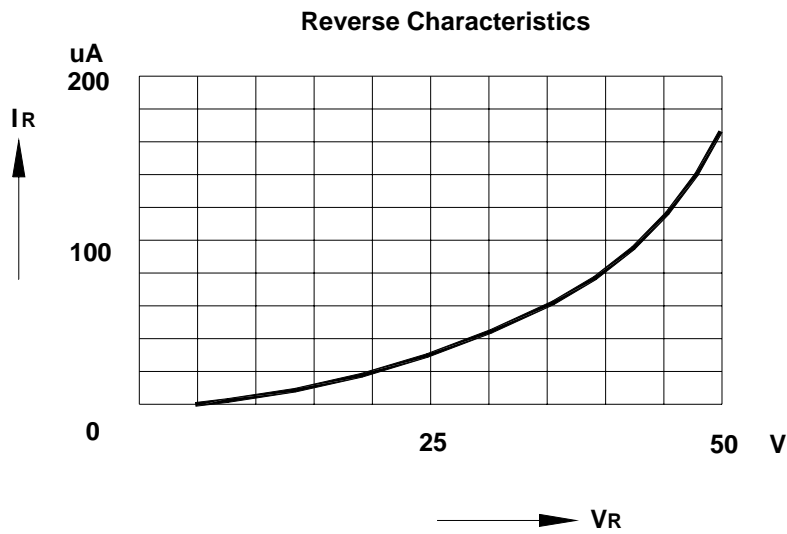
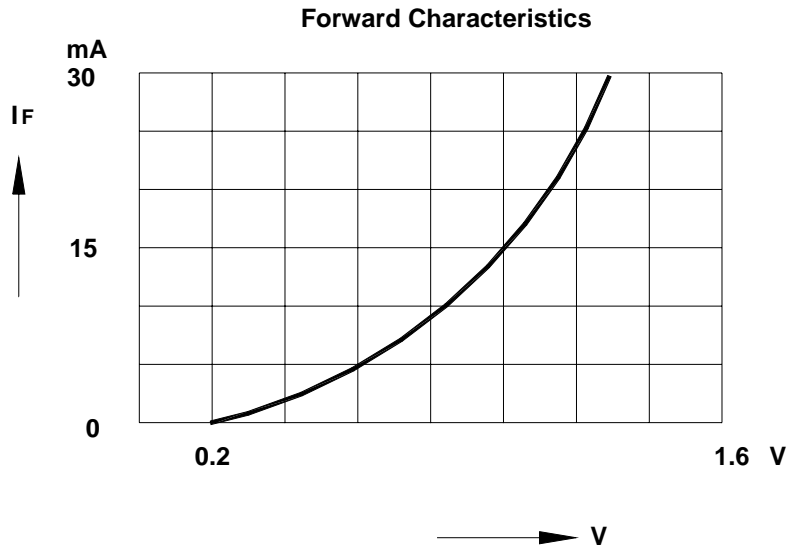


**SEMTECH ELECTRONICS LTD.**  
 Subsidiary of Sino-Tech International (BVI) Limited



Dated: 21/09/2013 Rev: 01

# 1N60PW, 1N60SW



**SEMTECH ELECTRONICS LTD.**  
Subsidiary of Sino-Tech International (BVI) Limited



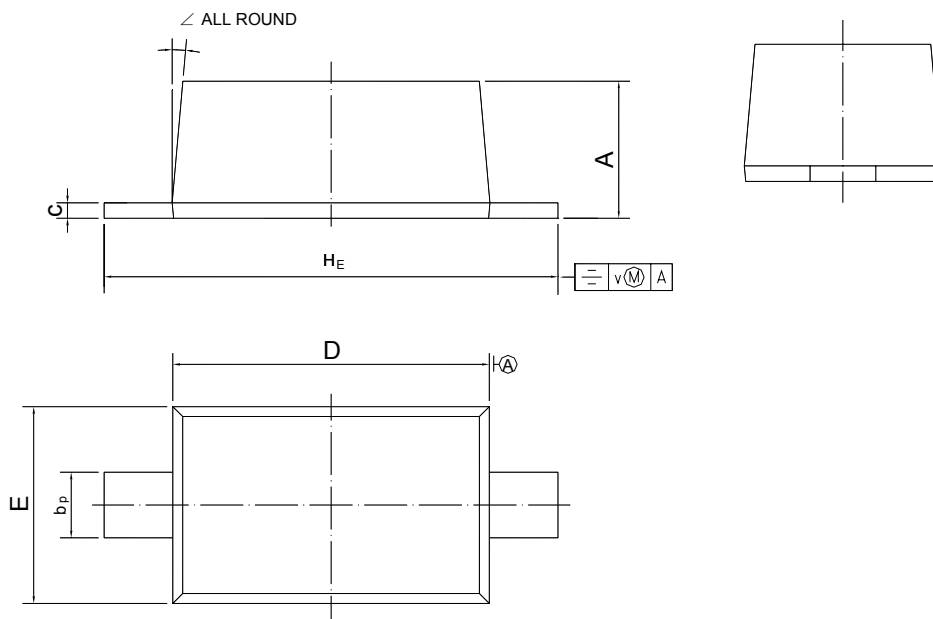
Dated: 21/09/2013 Rev: 01

# 1N60PW, 1N60SW

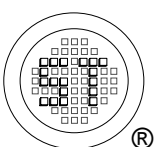
## PACKAGE OUTLINE

Plastic surface mounted package; 2 leads

SOD-123



UNIT	A	b <sub>p</sub>	c	D	E	H <sub>E</sub>	v	∠
mm	1.15 1.05	0.6 0.5	0.135 0.100	2.7 2.6	1.65 1.55	3.85 3.55	0.2	5°



**SEMTECH ELECTRONICS LTD.**  
Subsidiary of Sino-Tech International (BVI) Limited



Dated: 21/09/2013 Rev: 01